

# iDAQ-62731

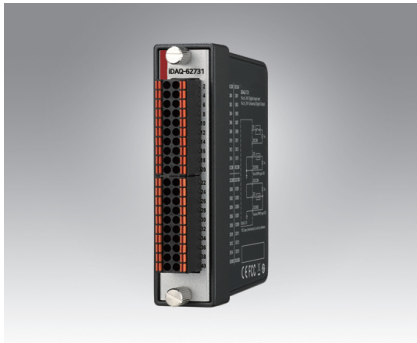
# iDAQ-62751

# iDAQ-62763

16-ch IDI and 16-ch Universal IDO iDAQ Module

48-ch TTL Digital I/O iDAQ Module

16-ch SSR Output iDAQ Module



iDAQ-62731



iDAQ-62751



iDAQ-62763



## Specifications

### Isolated Digital Input

- **Channels** 16
- **Input type** Sink (NPN)
- **Input logic level (referenced to DICOm)**
  - OFF state 0 V ~ +3 V
  - ON state +10 V ~ +40 V
- **Input current draw**
  - OFF state 1 mA max.
  - ON state 3 mA max.
- **Input protection voltage** +60 V max, -8 V min.
- **Response time** 100  $\mu$ s max.
- **Debounce filter** 10  $\mu$ s ~ 84 ms, software configurable
- **Isolation protection** 600 VRMS
- **Acquisition type** Instant or buffered, software configurable
- **Buffered acquisition**
  - Sample rate** 10 kHz max., software configurable
  - Internal data buffer (FIFO) size** 512 samples, each sample contains state of all channels
- **Edge detection** Rising edge, falling edge, or both edges, software configurable for each channel independently
- **Pattern match detection** By port detection, each channel can be enabled or disabled by software independently
- **Frequency** 1 kHz max.
- **Other feature** Latch digital input states when interrupt occurs
- **Timing signal output to chassis** From one of the digital input channels or digital input pattern match event, software configurable

### Universal Isolated Digital Output

- **Channels** 16
- **Output type** Sink (NPN) or source (PNP), software configurable per port (8-channel)
- **Load voltage** +10 V ~ +40 V
- **Load current** 350 mA max. per channel
- **Output impedance** 0.2  $\Omega$  max.
- **Response time** 100  $\mu$ s max.
- **Isolation protection** 600 VRMS
- **Current limit protection** Yes
- **Flyback diode protection** Yes
- **Power-on output state** OFF state
- **Acquisition type** Static or buffered, software configurable
- **Buffered output**
  - Update rate** 10 kHz max., software configurable
  - Internal data buffer (FIFO) size** 512 samples, each sample contains state of all channels

### General

- **Power consumption from chassis** 425 mW typ./ 450 mW max.
- **Dimensions** 100 x 80 x 25 mm (3.94 x 3.15 x 0.98 in.)
- **Operating temperature** -20 °C to 60 °C (-4 °F to 140 °F)
- **Storage temperature** -40 °C to 70 °C (-40 °F to 158 °F)
- **Operating humidity** 10% to 90% RH, non-condensing
- **Storage humidity** 5% to 95% RH, non-condensing
- **Vibration** 5Grms
- **Shock** 30G
- **Certification** EMC: CE, FCC  
Safety: CB, UL

## Ordering Information

- **iDAQ-62731** 16-ch IDI and 16-ch Universal IDO iDAQ module

## Specifications

- **Channels** 48, software configurable for input or output
- **Digital Input**
  - Input logic level**
    - Logic high 3.5 V min.
    - Logic low 1.5 V max.
    - Working voltage -0.25 V ~ 5.25 V
    - 0.5V ~ 6.5V
  - Input protection voltage** 50 k $\Omega$
  - **Pull-down resistor** 50 k $\Omega$
  - **Response time** 5  $\mu$ s max.
  - **Debounce filter** 5, 12  $\mu$ s ~ 84 ms, software configurable
  - **Acquisition type** Instant or buffered, software configurable
- **Buffered acquisition**
  - Sample rate** 10 kHz max., software configurable
  - Internal data buffer (FIFO) size** 256 samples, each sample contains state of all channels
- **Interrupt**
  - Edge detection** Rising edge, falling edge, or both edges, software configurable for each channel independently
  - Pattern match detection** By port detection, each channel can be enabled or disabled by software independently
  - Frequency** 1 kHz max.
  - Other feature** Latch digital input states when interrupt occurs
- **Trigger output to chassis** From one of the digital input channels or pattern match output, software configurable

### Digital Output

- **Output logic level**
  - Logic high 4.0 V min. @ 2 mA source, 5.2 V max.
  - Logic low 0.3 V max. @ 2 mA sink
- **Output current**
  - One channel 5 mA max.
  - All channels summed 64 mA max.
- **Response time** 5  $\mu$ s max.
- **Default output state** Logic low
- **Acquisition type** Static or buffered, software configurable
- **Buffered output**
  - Update rate** 10 kHz max., software configurable
  - Internal data buffer (FIFO) size** 256 samples, each sample contains state of all channels

### General

- **Power consumption from chassis** 1.05 W typ. / 1.5 W max.
- **Dimensions** 100 x 80 x 25 mm (3.94 x 3.15 x 0.98 in.)
- **Operating temperature** -20 °C to 60 °C (-4 °F to 140 °F)
- **Storage temperature** -40 °C to 70 °C (-40 °F to 158 °F)
- **Operating humidity** 10% to 90% RH, non-condensing
- **Storage humidity** 5% to 95% RH, non-condensing
- **Vibration** 5Grms
- **Shock** 30G
- **Certification** EMC: CE, FCC  
Safety: CB, UL

## Ordering Information

- **iDAQ-62751** 48-ch TTL Digital I/O iDAQ module

## Specifications

### Solid State Relay (SSR) Output

- **Channels** 16
  - **Load voltage** 60 VDC max.
  - **Load current** 1.3 A max. @ 25 °C / 0.7 A max. @ 60 °C per channel
  - **Peak load current** 4 A (100 ms, 1 pulse)
  - **Output impedance** 0.13  $\Omega$  typ./0.5  $\Omega$  max.
  - **OFF-state leakage current** 1  $\mu$ A max.
  - **Response time**
    - Turn-on time 1.0 ms typ./1.3 ms max.
    - Turn-off time 0.6 ms typ./0.8 ms max.
  - **Isolation protection** 600 VRMS
  - **Power-on output state** OFF state
  - **Acquisition type** Static or buffered, software configurable
  - **Buffered output**
    - Update rate** 500 Hz max., software configurable
    - Internal data buffer (FIFO) size** 512 samples, each sample contains state of all channels
- ### General
- **Power consumption from chassis** 225 mW typ./ 800 mW max.
  - **Dimensions** 100 x 80 x 25 mm (3.94 x 3.15 x 0.98 in.)
  - **Operating temperature** -20 °C to 60 °C (-4 °F to 140 °F)
  - **Storage temperature** -40 °C to 70 °C (-40 °F to 158 °F)
  - **Operating humidity** 10% to 90% RH, non-condensing
  - **Storage humidity** 5% to 95% RH, non-condensing
  - **Vibration** 5Grms
  - **Shock** 30G
  - **Certification** EMC: CE, FCC  
Safety: CB, UL

## Ordering Information

- **iDAQ-62763** 16-ch SSR Output iDAQ module